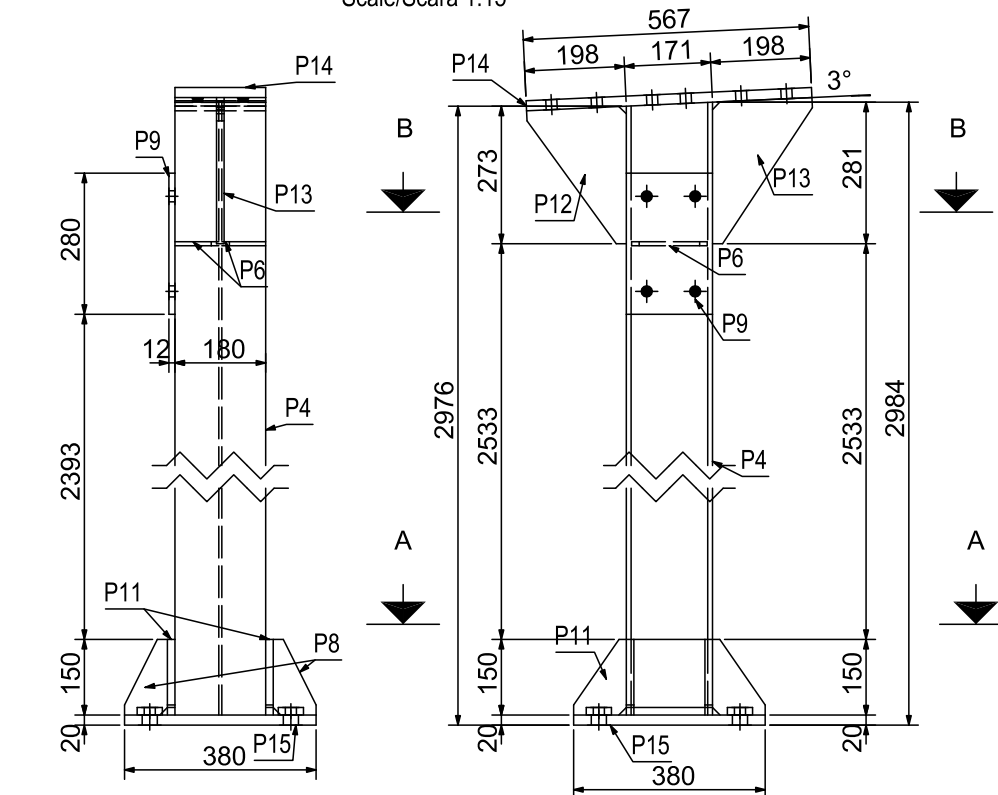
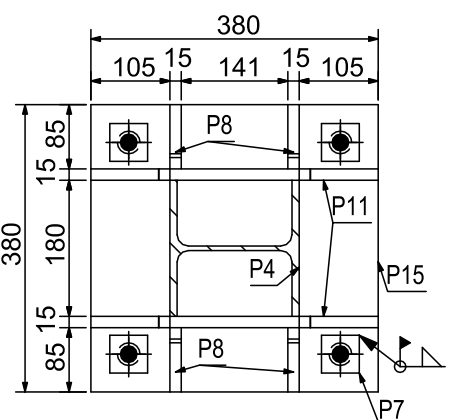


Column/Stalpul (C2) HEA180-1 pcs./buc.

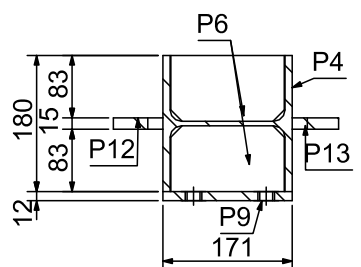
Scale/Scara 1:15



Section A - A
scara 1:10

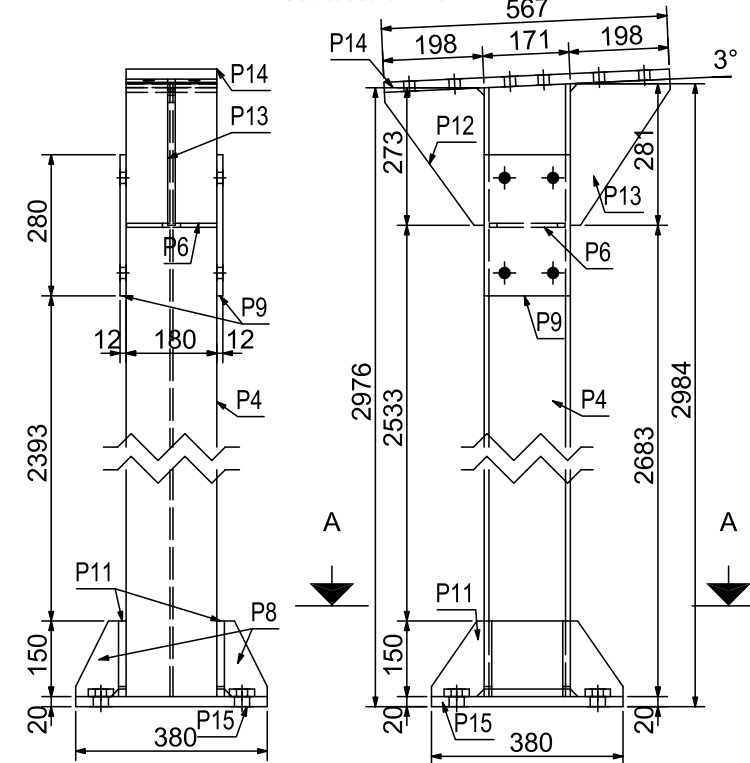


Section B - B
scara 1:10

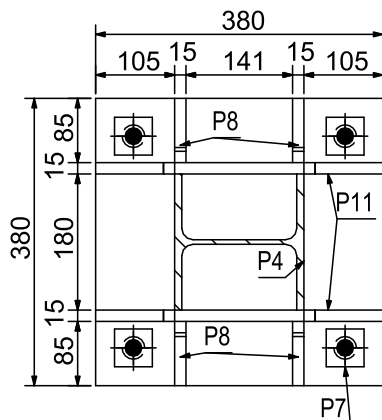


Column/Stalpul (C3) HEA180-1 pcs./buc.

Scale/Scara 1:15

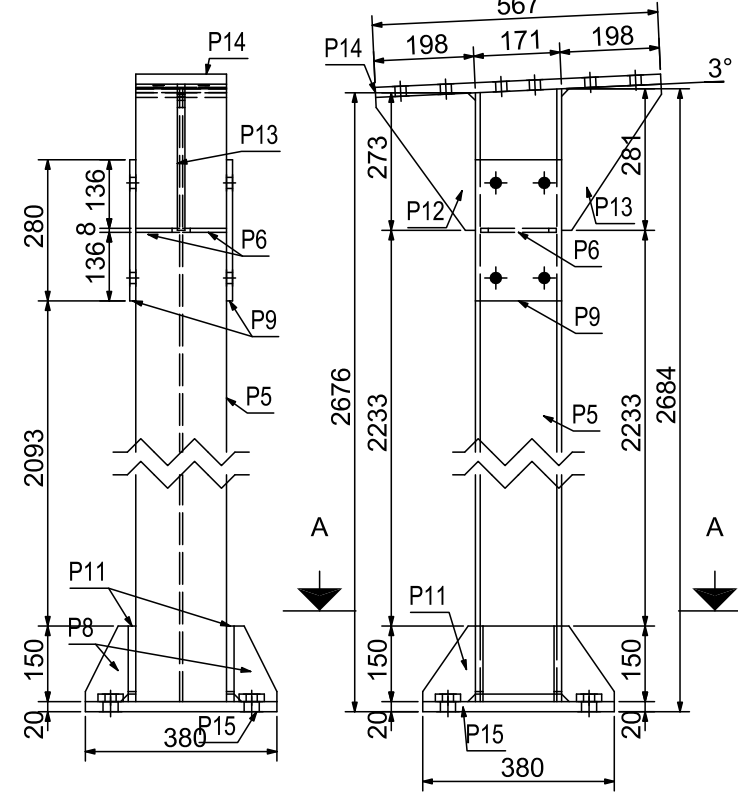


Section A - A
scara 1:10

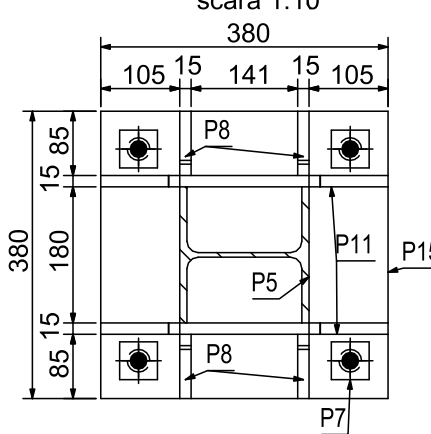


Column/Stalpul (C4) HEA180-1 pcs./buc.

Scale/Scara 1:15

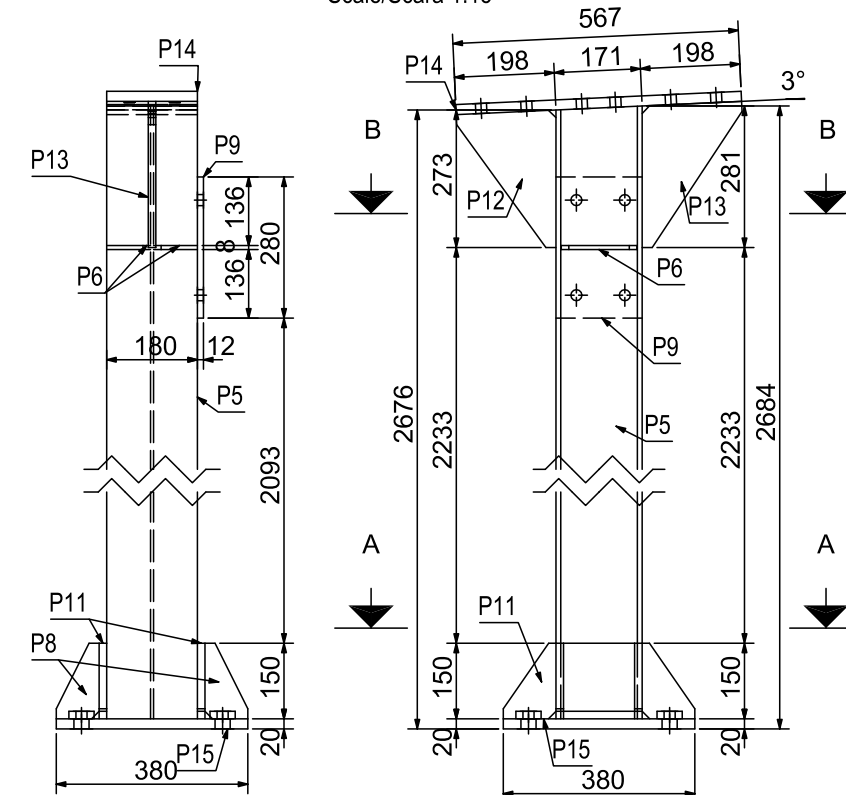


Section A - A
scara 1:10



Column/Stalpul (C5) HEA180-1 pcs./buc.

Scale/Scara 1:15



Mark	Quantity	in Assembly
P3	3	A3
P6	48	A3
P140	18	A3
P141	18	A3

Mark	Quantity	in Assembly
P2	4	A2
P9	8	A2
P10	16	A2

Mark	Quantity	in Assembly
P1	6	A1

Mark	Quantity	in Assembly
P4	1	C6
P6	2	C6
P7	4	C6
P8	4	C6
P9	1	C6
P11	2	C6
P12	1	C6
P13	1	C6
P14	1	C6
P15	1	C6

Mark	Quantity	in Assembly
P4	1	C2
P6	2	C2
P7	4	C2
P8	4	C2
P9	1	C2
P11	2	C2
P12	1	C2
P13	1	C2
P14	1	C2
P15	1	C2

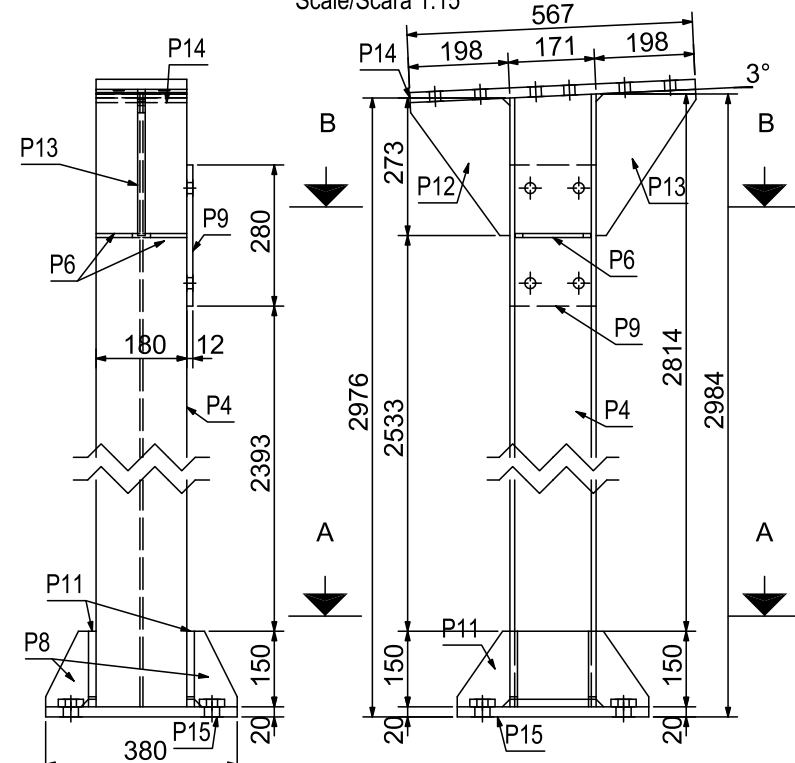
Mark	Quantity	in Assembly
P4	1	C3
P6	2	C3
P7	4	C3
P8	4	C3
P9	2	C3
P11	2	C3
P12	1	C3
P13	1	C3
P14	1	C3
P15	1	C3

Mark	Quantity	in Assembly
P5	1	C4
P6	2	C4
P7	4	C4
P8	4	C4
P9	2	C4
P11	2	C4
P12	1	C4
P13	1	C4
P14	1	C4
P15	1	C4

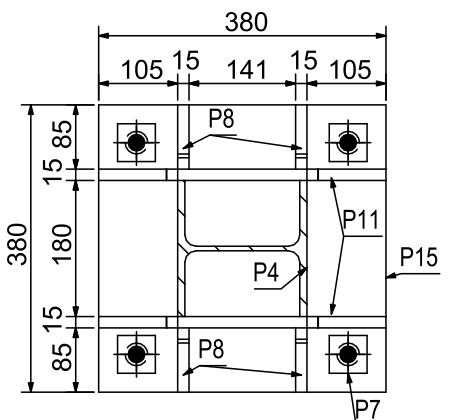
Mark	Quantity	in Assembly
P5	1	C5
P6	2	C5
P7	4	C5
P8	4	C5
P9	1	C5
P11	2	C5
P12	1	C5
P13	1	C5
P14	1	C5
P15	1	C5

Column/Stalpul (C6) HEA180-1 pcs./buc.

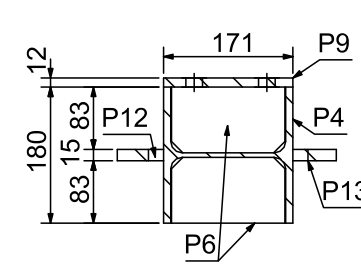
Scale/Scara 1:15



Section A - A
scara 1:10

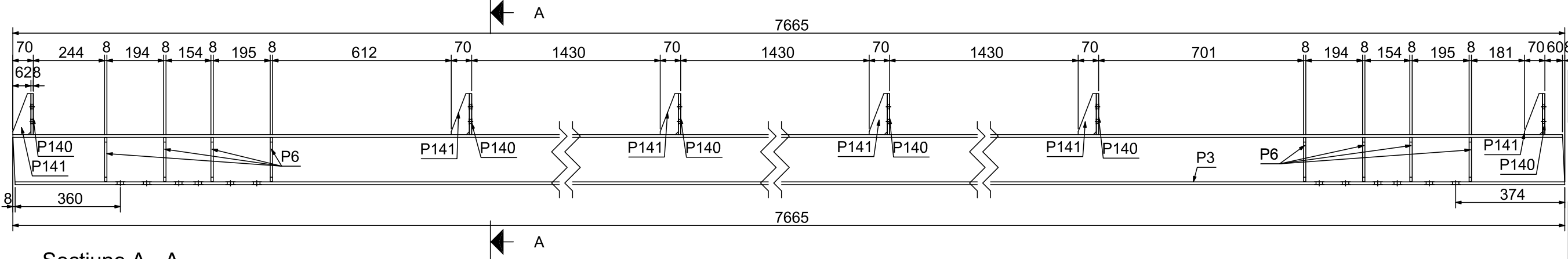


Section B - B
scara 1:10

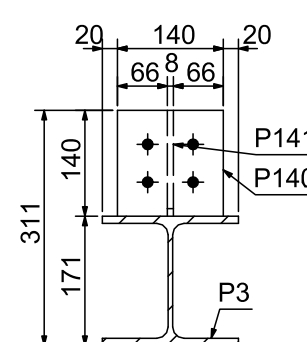


Beam/Grinda (A3) HEA180-3 pcs./buc.

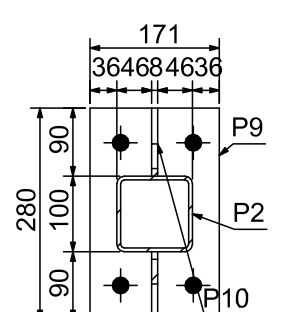
Scale / Scara 1:15



Section A - A
scara 1:10

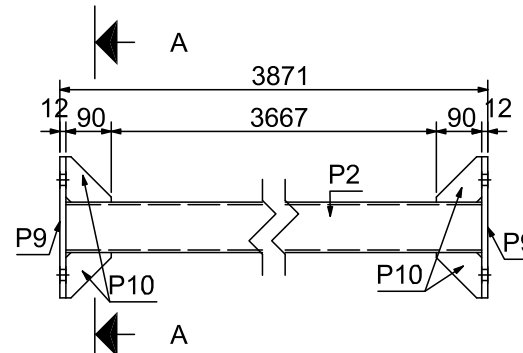


Section A - A
scara 1:10



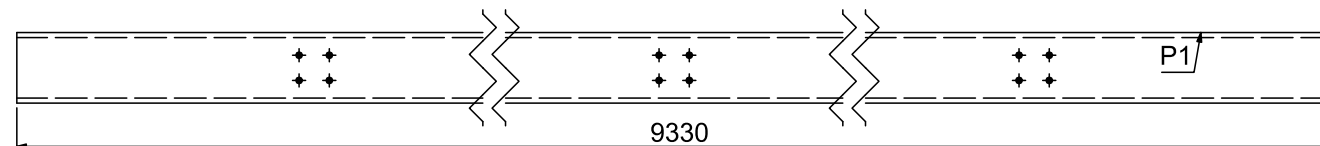
Beam/Grinda (A2) RHS100x5-4 pcs./buc.

Scale / Scara 1:15



Beam/Grinda (A1) UPN 140-6 pcs./buc.

Scale / Scara 1:15



Nota :
1. Pentru note generale a se vedea prima pagina.

02	18.03.2022		Emis pentru utilizare
01	14.03.2022		Emis pentru utilizare
Revizie	Data	Modificare ceruta de	Descriere modificare

Verificator / Expert	Nume	Semnatura	Cerinta	Referat / Expertiza Nr. / Data
Proiectant general	ROENGG CONSULTING SRL			Beneficiar : S.C. CONPET S.A.
Proiectant de specialitate	RO 24611389 / 0344 806 979 / contact@roengg.com			
				Titlul proiectului : INLOCUIRE GRUP DE POMPARE TITEI DEPOZIT SATCHINEZ JUDETUL TIMIS
Proiectat	Nume	Semnatura	SCARA : 1:50	Titlul plansei : PLAN STRUCTURA METALICA COPERTINA PENTRU GRUPUL DE POMPE
Verificat	State George		DATA : 18.03.2022	Plansa : 10202020-RNG-DM-12-003-02
Aprobat	Dobleaga Stefan			FAZA : P.T.+D.D.E. PAGINA : 2/3